

# Pasul 1

**Creati un nou fisier**, cu urmatoarele caracteristici:

Marimea: **800x600 pixeli**

**Fundal: Alb.**

**Culoare pentru unealta "Color Picker": # FFFFFFFF.**

**Rezolutia imaginii: 72 dpi.**

Open a New Document.

Size: 800 X 600

Resolution : 72

Start by filling the background with white color.

Or Type # FFFFFFFF in the color picker.

# Pasul 2

Vom lucra cu multe layere in cele ce urmeaza. **Vom desena contururi in layere separate, prin urmare trebuie sa creati un nou layer de fiecare data cand veti desena noi linii.** Sa incepem.

**Creati un nou Layer si denumiti-l "Petale 1".**

Folositi o pensula de **2 sau 3 px de tip "hard brush"** pentru a desena contururile pentru petalele din mijloc ale trandafirului.

Puteti de asemenea folosi unealta **Pencil Tool (B)** pentru a realiza desenul.

Folositi aceeasi grosime a conturului, de 2 sau 3 px.



Open a New Layer, name it, "Petals 1".

Start by drawing part of the center of the petals of the rose.

With a 2 or 3 px hard brush, make some lines like I did.

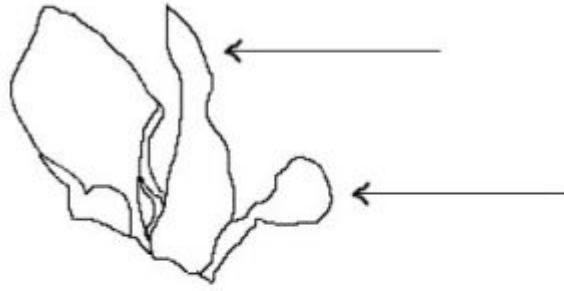
Use the Pencil Tool (B), if you feel more comfortable drawing with it. Use the same 2 to 3 px size.

## Pasul 3

Dupa ce ati desenat conturul pentru petalele din mijloc, **creati un nou layer, "Petale 2"**.

Folositi acelasi tip de pensula de mai sus pentru a desena inca doua petale in partea dreapta a celei deja desenate.

**Permiteti ca noile linii sa se intersecteze cu celelalte.**



Open a New Layer, name it, "Petals 2"

Draw two more petals to the right side side of the ones you drew.

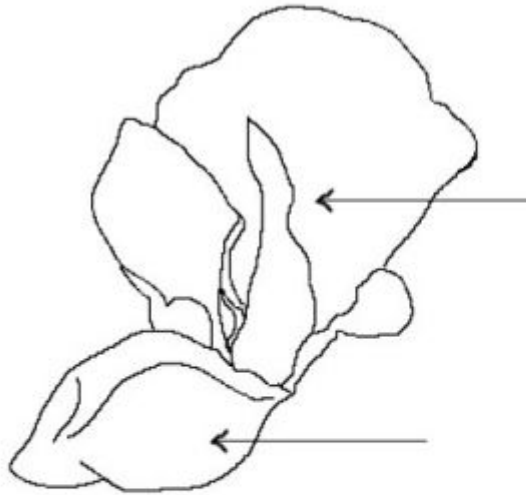
Use same 2 or 3 px hard brush and let the lines intersect.

## **Pasul 4**

Vom continua sa desenam petale.

De aceasta data vom mai adauga inca doua trandafirului pe care il desenam.

**Creati un layer nou, "Petale 3".**

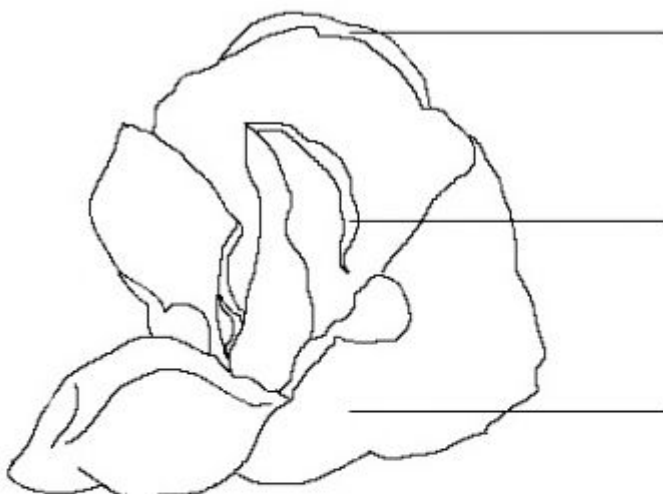


We'll continue with the same procedure, as we have done, drawing the outlines for the petals. This time, you'll draw two more petals, in a New Layer, name it, "Petals 3".

## Pasul 5

Continuati sa desenati petale, ca in figura de mai jos, cu linii adiacente in loc de sageti.

**Creati un nou layer, "Petale 4".**



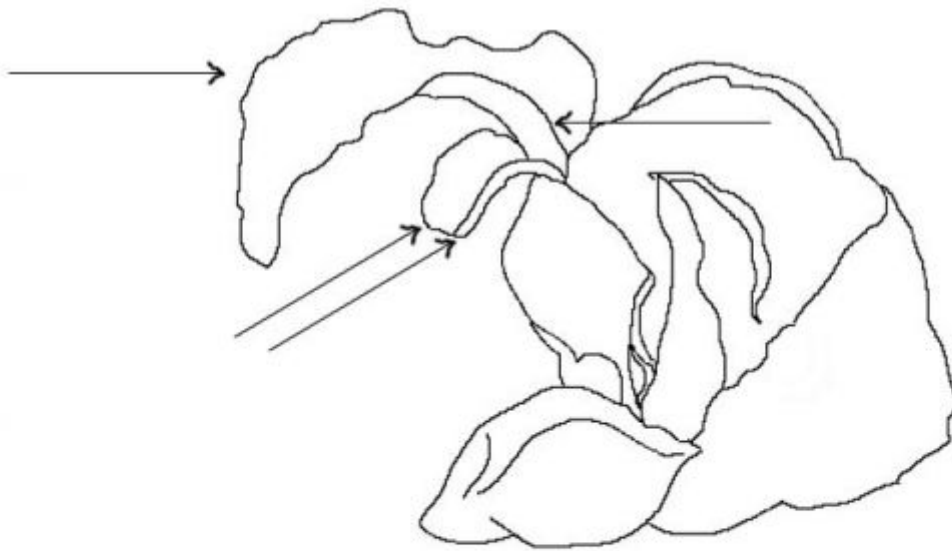
Time to draw more petals. Open a New Layer, name it, "Petals 4".

## **Pasul 6**

Cand priviti trandafirul veti vedea ca petalele sunt frumoase in forma si culoare. Marginile sunt simple curbe si linii. Acest lucru confera trandafirului frumusetea unica intr-o gradina.

**Creati un nou layer, "Petale 5".**

Vom folosi layere separate pentru desenarea conturilor trandafirului deoarece, cand vom incepe sa adaugam si culoare vom vedea ca unele trebuie sa se intersecteze cu celelalte. Putem controla lucrul culorilor pentru a da trandafirului forma si fond.



If you have seen the petals of a rose, you know now, that the edges have some curves, and lines that give the rose that beauty. You'll draw for more shapes to the left side of the forming flower. Open a New Layer, name it, "Petals 5".

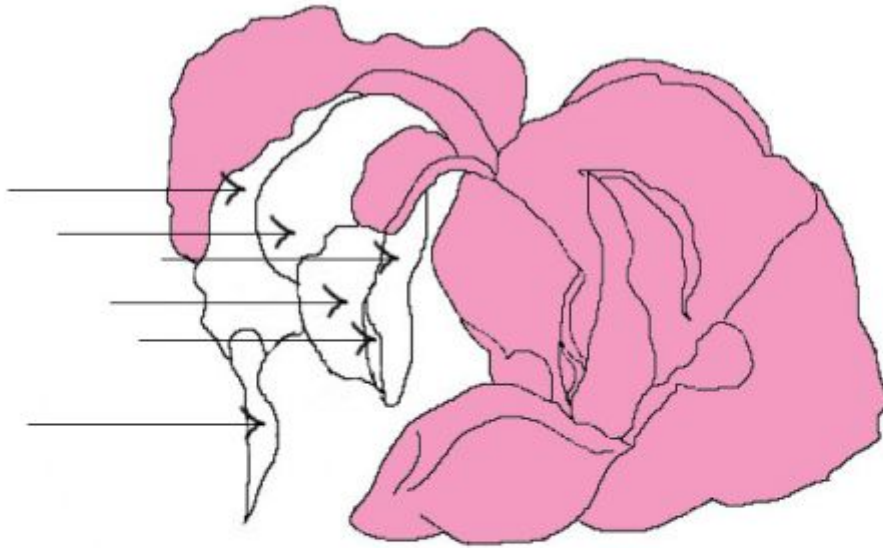
The reason of keeping the petals on separate layers, is because when we start adding color and shadows to the petals, you'll need to overlap some of them to give the rose, form, and details.

## **Pasul 7**

Zonele colorate arata cat am desenat din contururi. Nu trebuie sa adaugati culoare la munca depusa.

**Creati un nou layer, "Petale 6".**

De data aceasta vom desena patru petale mai mari si doua mai mici.



The colored area shows your progress. You do not have to paint over the petals yet. Open a New Layer, name it, "Petals 6".

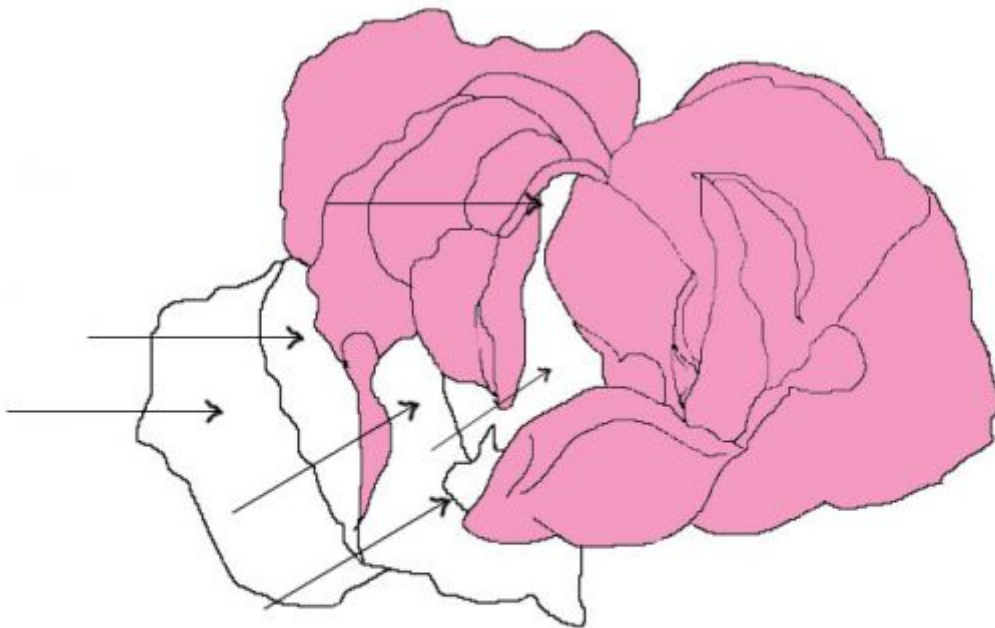
Draw the white area only, 4 big petals and 2 smaller.

## **Pasul 8**

Repetati aceeasi procedura, ca inainte.

Desenati contururile pentru spatiile albe. Incercati sa fiti precisi la desenare; acest lucru va va ajuta la sfarsitul desenului.

**Creati un nou layer, "Petale 7".**



Same procedure as you did before. Draw the spaces in white. Try to be accurate in the drawing of these shapes, it will help you at the end with the results of your drawing.

Open a New Layer. Name layer, "Petals 7".

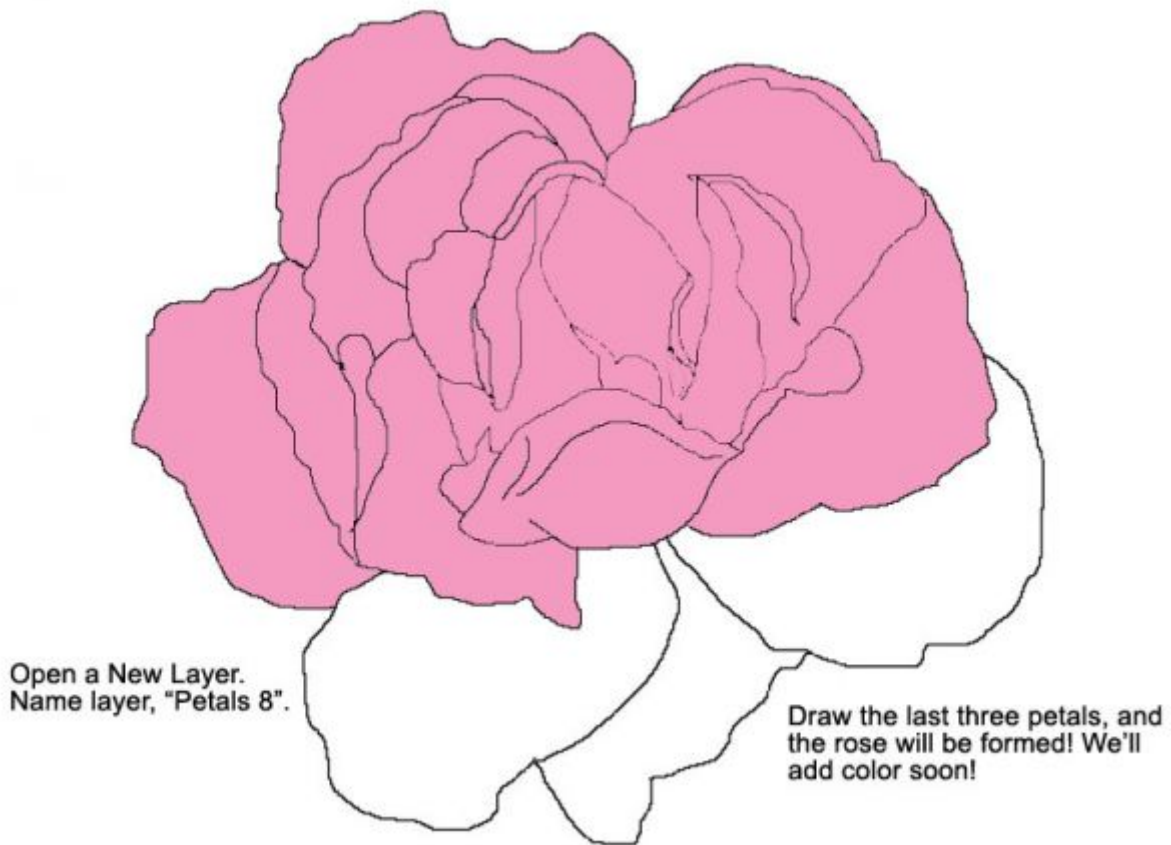
## Pasul 9

Desenarea conturilor trandafirului este aproape terminata.

Desenati ultimele trei petale ale trandafirului.

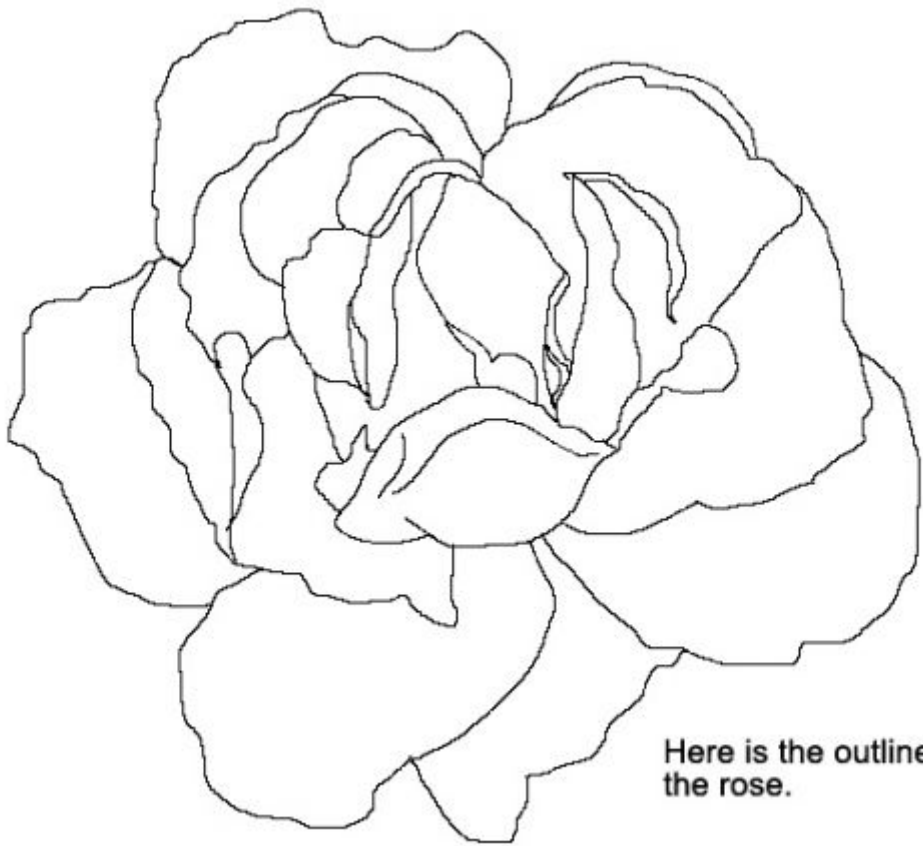
**Creati un nou layer, "Petale 8".**





## **Pasul 10**

Acestea sunt contururile transafirului. Nu combinati inca layerele, ci lasati-le asa cum sunt.



Here is the outline for the rose.

## **Pasul 11**

### **Colorarea petalelor.**

Exista cateva palete de culori pentru pictarea petalelor din mijloc.

Le puteti obtine selectand culorile negre si albe presetate. Cand unealta "color picker" se deschide scrieti numarul care vi s-a spus si veti obtine culorile de mai jos.

Acesta este totodata si un exemplu practic pentru amestecarea culorilor pe care il puteti incerca.

**Se foloseste o pensula "moale" de 21 px cu opacitate 50%, pentru a picta, dar uneori se poate folosi si o pensula mai "tare" de o marime mai mare.**

**Amestecurile sunt obtinute cu unealta Smudge Tool (R) cu o tarie de 45-50% (pentru un amestec lin).**

These are the colors,  
we'll use on the petals in the middle.



# 996633



# CC9966



# CCCC99



This is a blending of the three colors  
we are using in some petals.  
It was smudged with a 24 px  
Spatter brush. Strength of 45 %.

Color # 996633



21 px soft brush.  
Opacity: 100%.



21 px soft brush.  
Opacity: 50 %.  
Smudged 2 times  
same area below.

Smudge Practice:  
Paint first.  
Use a Spatter 24 px brush.



Strength: 100%

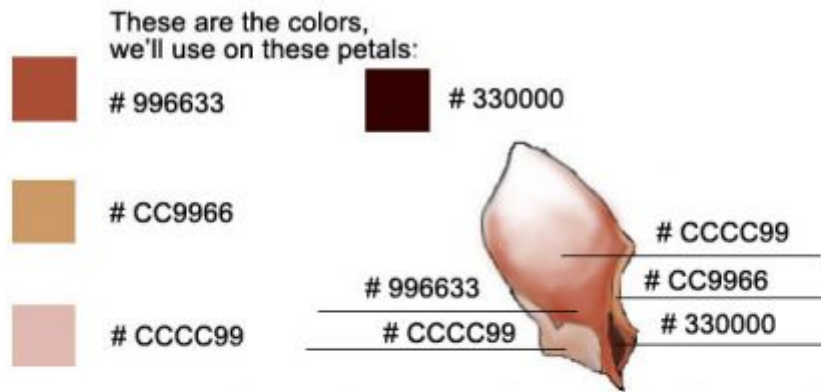


Strength: 45%

## Pasul 12

### Atentie!

Cititi informatiile date in cadrul acestui pas pentru a va forma o idee despre cum puteti folosi amestecurile si paletele de culori.



Use a 13 px soft brush (small brush for small areas) Opacity of 50%.

Start your blending from the center of the bigger petal with color # 996633.

Add a little of color # CCCC99 to the middle. Blend with a 21 px Spatter brush. and Opacity of 50%. ( The smaller areas can be blended with a smaller Spatter brush. Even an 10 px will work well)

Use color # CCCC99 for the area to the left and # CC9966 narrow area to the right. The small darker area is color # 330000.

Zoom the areas to be blended to a 300%, so you can see better the details.

After you are done, open a New Layer, name layer, "Rose 1". These layers, are the ones that will keep the colored petals.

## Pasul 13

Acest lucru ar trebui sa obtineti.



Here are the middle petals blended. Try to get something like this.

## **Pasul 14**

**Creati un nou layer, "Petale 12".**

**Folositi aceeasi pensula de 21 px, "soft Spatter" pentru amestecarea culorilor. Uneori puteti folosi o pensula mai mica pentru zone inguste.**

**Folositi o pensula cu margini moi pentru pictat, de marime 13 px. Folositi culorile date in zonele indicate cu linii.**

Acesta va fi o sarcina repetitiva, atunci cand pictati si amestecati culorile.

Open a New Layer over Layer, "Petals 2".

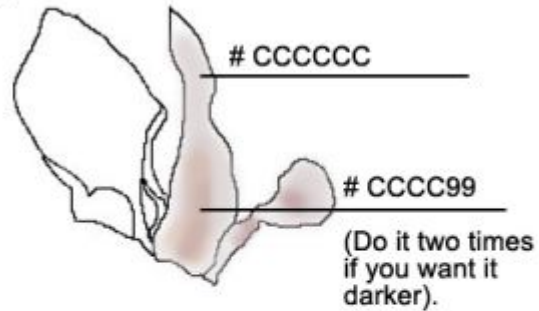
Using the same 13 px soft brush, with an Opacity of 50%, paint over the new petals with the following colors.



# CCCCCC



# CCCC99



You'll be doing the same smudging technique that you used over the petals you just finished.

This process will be repetitive, over and over, until all the petals of the rose are formed.

I recommend to use the same 21 px size Spatter brush to start the smudging. The Strength has to be 50% most of the time, but you can reduce it, mostly at the outer edges of the roses, where color is lighter.

Remember to change the size of the Spatter brush, when you are working over the reduced, narrow areas.

## Pasul 15

Acesta este rezultatul amestecurilor pe care ar trebui deja sa il aveti.

Ascundeti layerele "Petale 1" si "Petale 2" pentru a lasa deoparte inceputul pictarii trandafirului.

Salvati layerul cu numele "Trandafir 2".



This is the result of the blendings you should have now. You can hide the outline layers for "Petals 1", and "Petals 2", to see your progress.

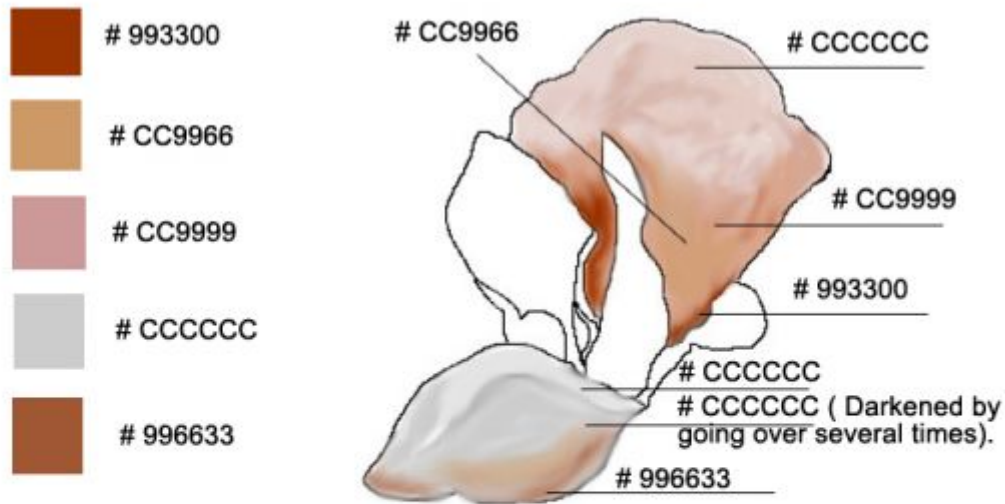
Open a New Layer, name layer, "Rose 2".

## **Pasul 16**

**Deschideti layerul "Petale 3".**

**Pictati peste el noile petale. Creati un nou layer "Trandafir 3".**

Folositi aceeasi tehnica pe care ati folosit-o anterior pentru a obtine amestecul pentru petale folosind culorile indicate in acest pas.



We've added two more petals to the rose.

Open Layer, "Petals 3". Use the same technique, brushes, opacity and strength as you did before. Start painting over a new layer, name layer, "Rose 3".

## Pasul 17

Petalele din mijloc incep sa prinda forma. Dupa cum se poate vedea culorile prind viata. Setati layerul "Petale 3" inactiv cu un clic pe "ochii" care sunt pe coloana de layere in stanga layerului.

Acest layer ramane cu denumirea "Trandafir 3".





Beauty is taking its form. After smudging and blending, the colors are coming alive. You can make your outlines layers inactive as you did before. Open a New Layer for the forming rose. Name layer, "Rose 3".

## **Pasul 18**

**Deschideti layerul "Petale 4".**

**Desenati peste el unul nou pe care sa il denumiti "Trandafir 4".**

Incercati sa amestecati culorile intr-un mod placut.



Open layer, "Petals 4". Do the same procedure again.  
Paint over a New Layer. Name layer, "Rose 4".  
Smudge the colors to blend nicely.

## Pasul 19

Puteti observa mai jos stadiul lucrarii.

**Layerul obtinut se denumeste "Trandafir 4".**



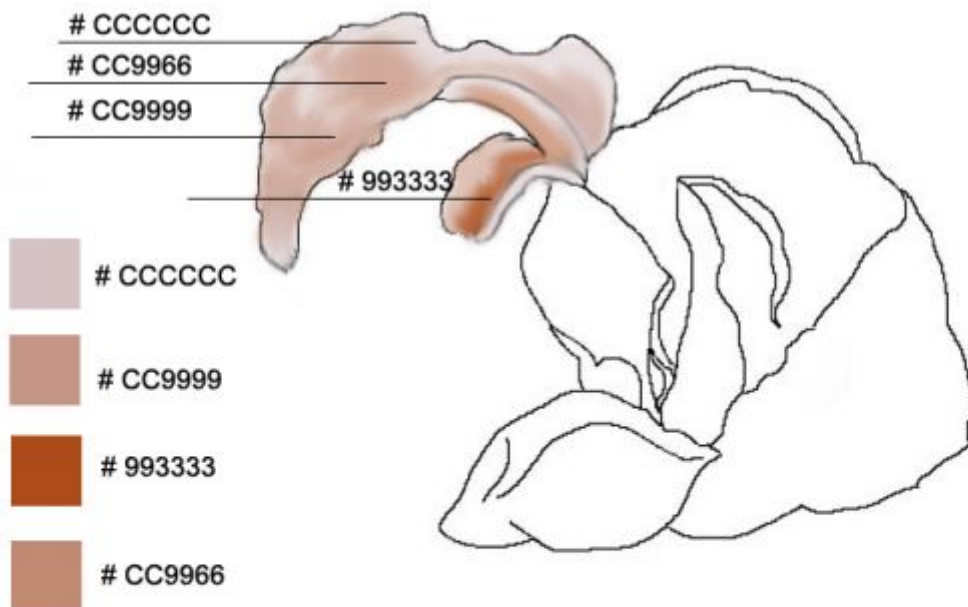
More progress is shown here, with the new added petals.  
Name New Layer, "Rose 4".

## **Pasul 20**

**Deschideti layerul "Petale 5".**

**Creati un nou layer, "Trandafir 5".**

Incepeti sa colorati noile petale si salvati layerele pictate pentru petale.



Open layer, "Petals 5". Start by filling the petals shapes with color.  
Open a New Layer, name it, "Rose 5".  
You will paint over this new layer, keeping the outlines layer by itself.  
Always "Save" the layers with the painted petals.

## Pasul 21

Uneori, atunci cand adaugati sau amestecati culorile, rezultatul nu este unul placut. Daca acest lucru se intampla repetati operatia si adaugati mai multa culoare daca este necesar; schimbati marimea, opacitatea, gradul de tarie al pensulelor pentru a obtine un amestec placut.

**Layerul rezultat se denumeste "Trandafir 5".**



It is looking better. As I told you before, you can add more color to the petals until you get a nice blending, just use the Opacity and the Strength of the brushes in a low amount. This will give you a better result.

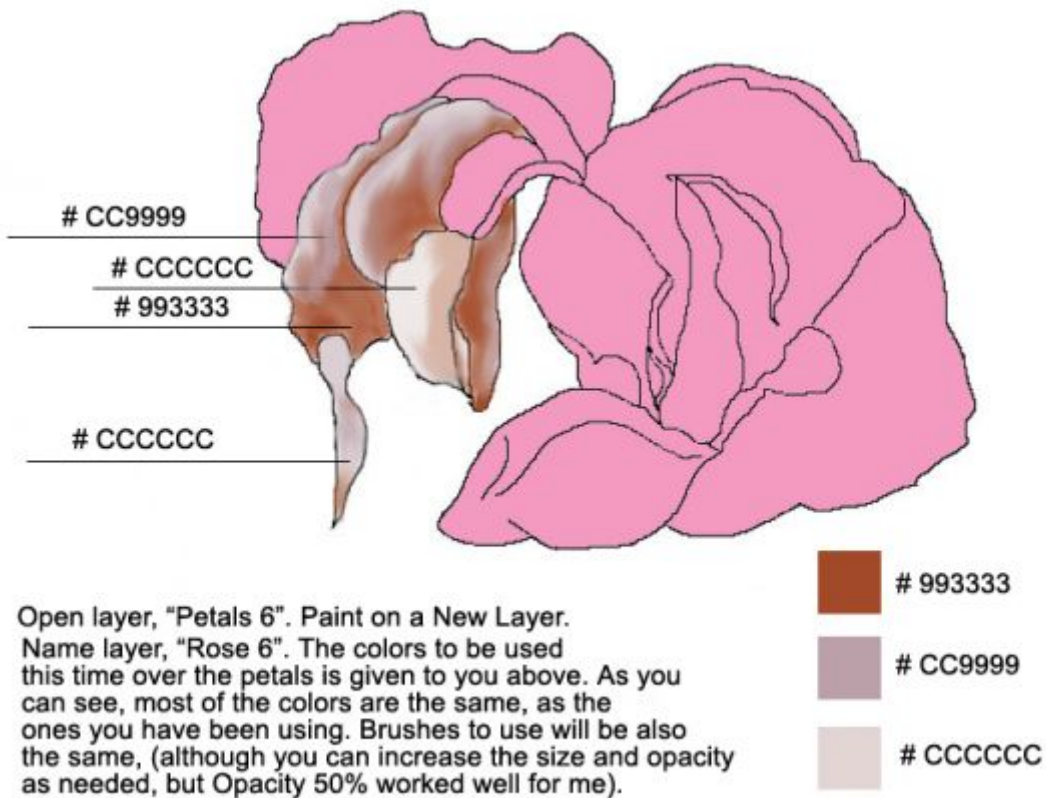
## **Pasul 22**

**Deschideti layerul "Petale 6".**

**Creati unul nou, "Trandafir 6".**

Asa cum ati observat, culorile pe care le-ati folosit au fost aceleasi mereu. Pensulele vor fi de asemenea aceleasi, cu mica schimbare de opacitate si grad de tarie.

**Este recomandat sa folositi acesti doi parametri la 50% pentru rezultate optime.**



Open layer, "Petals 6". Paint on a New Layer.  
 Name layer, "Rose 6". The colors to be used  
 this time over the petals is given to you above. As you  
 can see, most of the colors are the same, as the  
 ones you have been using. Brushes to use will be also  
 the same, (although you can increase the size and opacity  
 as needed, but Opacity 50% worked well for me).

## Pasul 23

Ati indeplinit destule lucruri iar trandafirul este aproape gata. Va trebui sa pictati petale mai mari data viitoare.



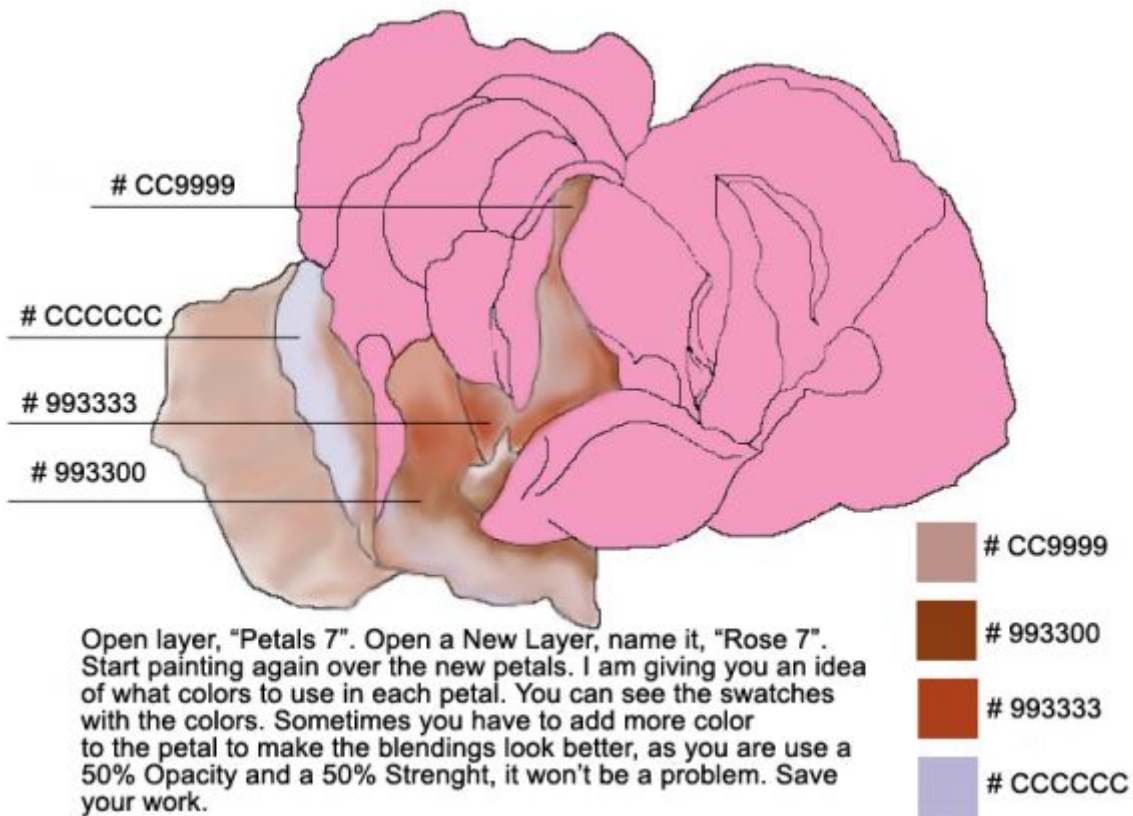
We have accomplished a lot, most of the rose is made. Colors look nice. You'll paint bigger petals next time. I never thought that digital painting was going to be difficult but beautiful.

## **Pasul 24**

**Urmati instructiunile de mai jos:**

**Deschideti layerul "Petale 7".**

**Pictati peste el un nou layer, "Trandafir 7".**



## Pasul 25

Acum puteti observa stadiul lucrului latrandafir.



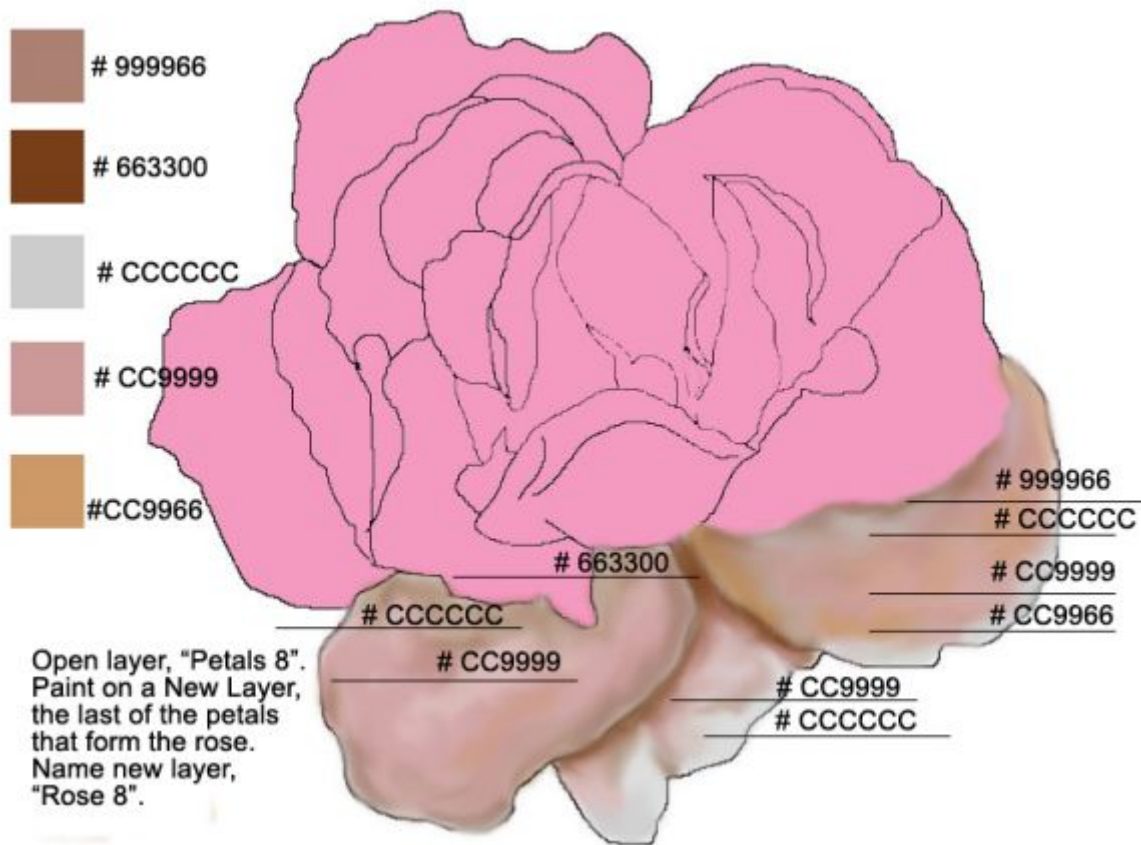


The rose is looking good. As I told you before, adding more color to the areas that you blended, will give more realism to the rose. Your blendings with the Smudge Tool (R), have to be precise.

## **Pasul 26**

Deschideti layerul "Petale 8".

Pictati peste un nou layer, "Trandafir 8".



## Pasul 27

Astfel arata o creatie pictata a unui trandafir. **Puteti face toate layerele cu contur inactive daca mai sunt unele deschise.**

De asemenea, toate layerele cu numele "**Trandafir**" in denumire pot fi contopite pentru a forma un singur layer. Daca doriti il puteti denumi "**Trandafir Digital**".



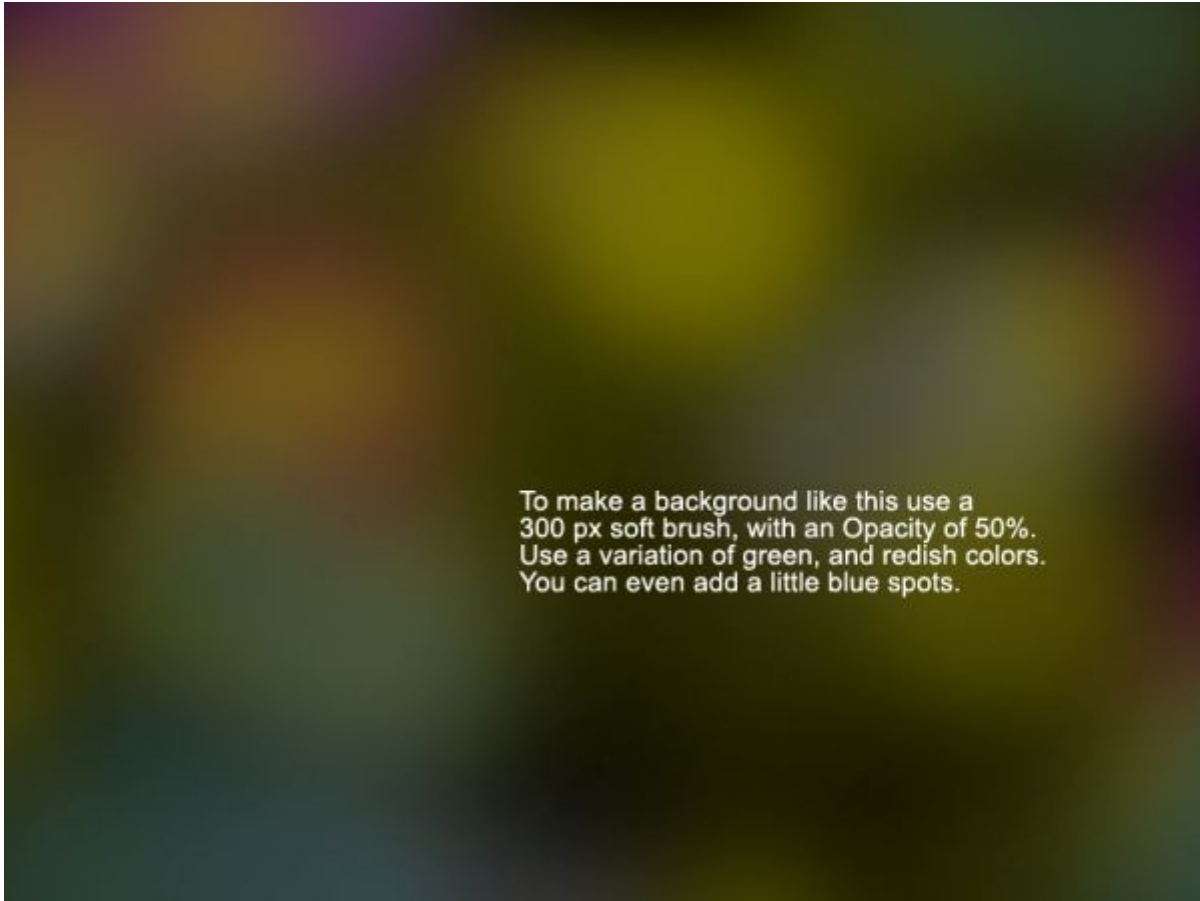
## **Pasul 28**

**Creati un nou layer si umpleti-l cu negru.**

**Denumiti-l "Fundal 2".**

Folositi diverse nuante de verde, rosu si albastru.

**Puteti face acest lucru folosind o pensula moale de 300 px si opacitate 50%; imprastiati aleator pentru a obtine acest efect.**



To make a background like this use a 300 px soft brush, with an Opacity of 50%. Use a variation of green, and redish colors. You can even add a little blue spots.

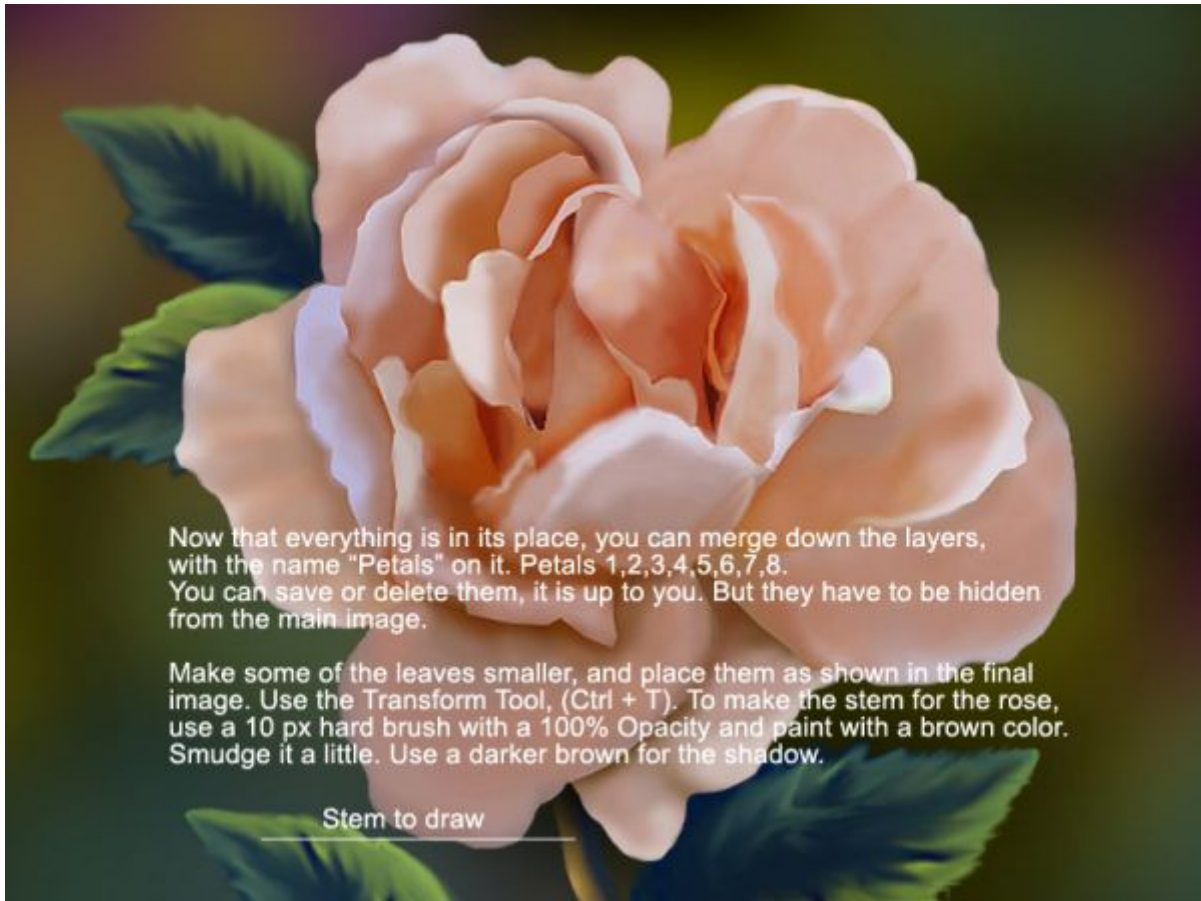
## **Pasul 29**

Respectati instructiunile pentru a crea frunze pentrutrandafir.



## Pasul 30

Iata mai multe sfaturi pentru a termina lucrul. Urmati-le cu grija pentru a ajunge cu succes la rezultatele dorite.



## Pasul 31

Am ajuns la capatul acestui tutorial.

O data cu obtinerea acestor forme frumoase ati invatat si cate ceva din arta pictarii digitale. Desi necesita multa rabdare si atentie rezultatele sunt cu totul aparte.

Mult succes in calatoria voastra prin lumea artelor!

